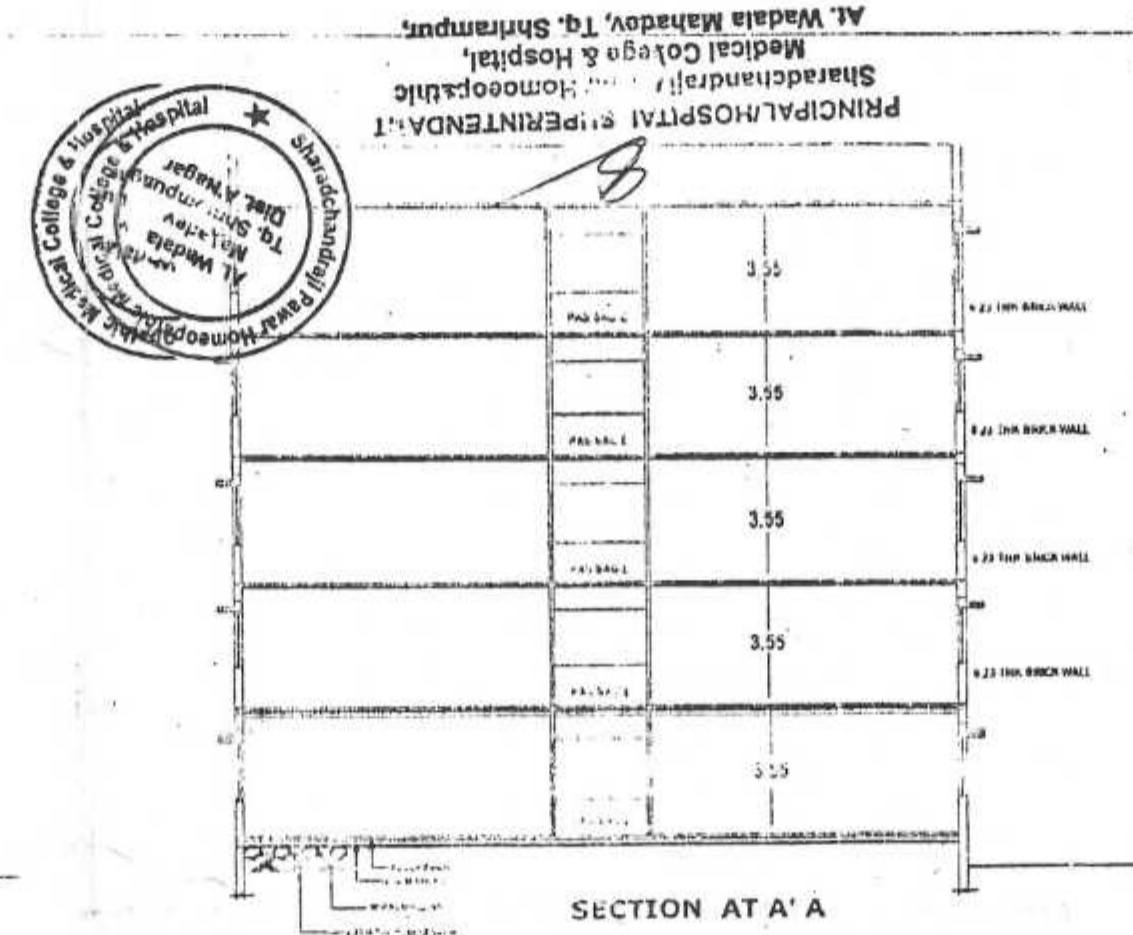
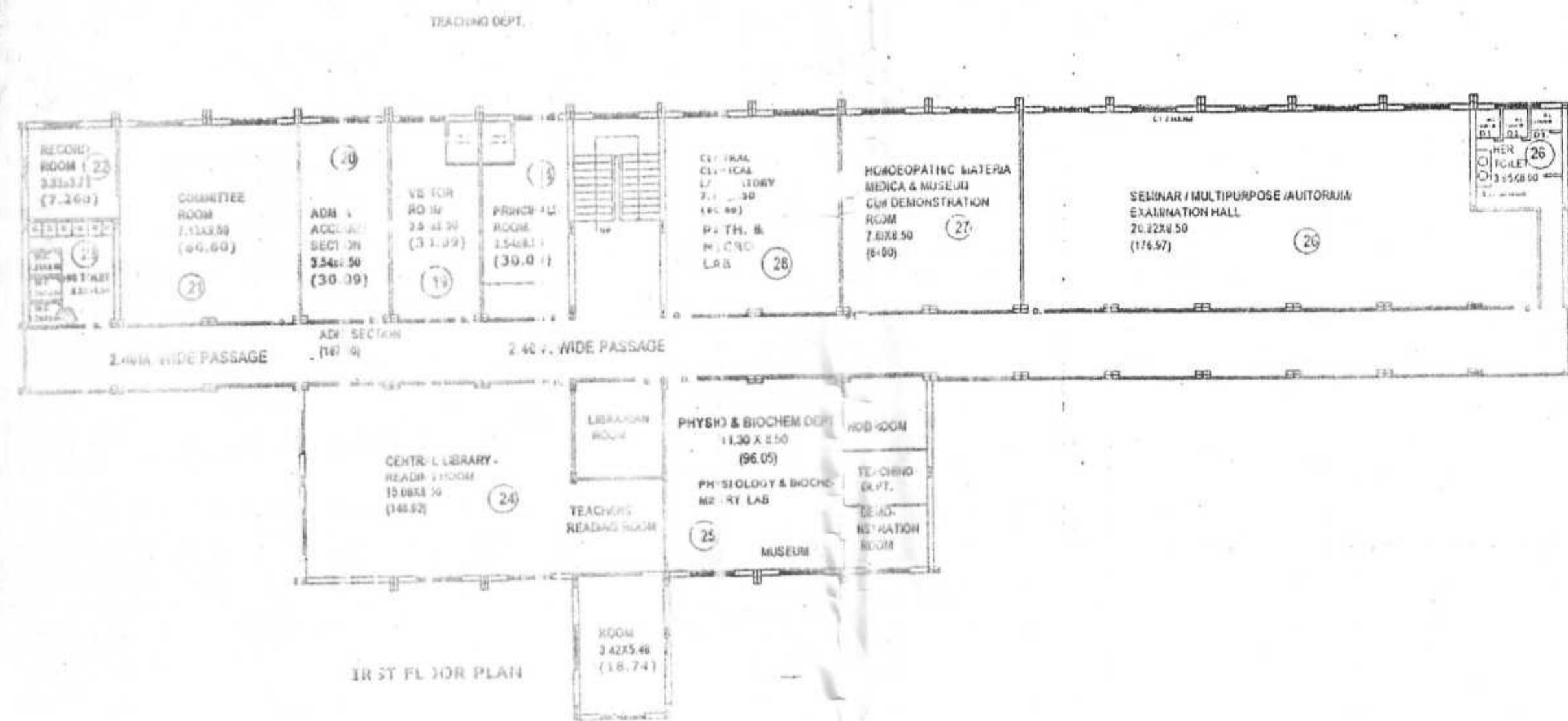


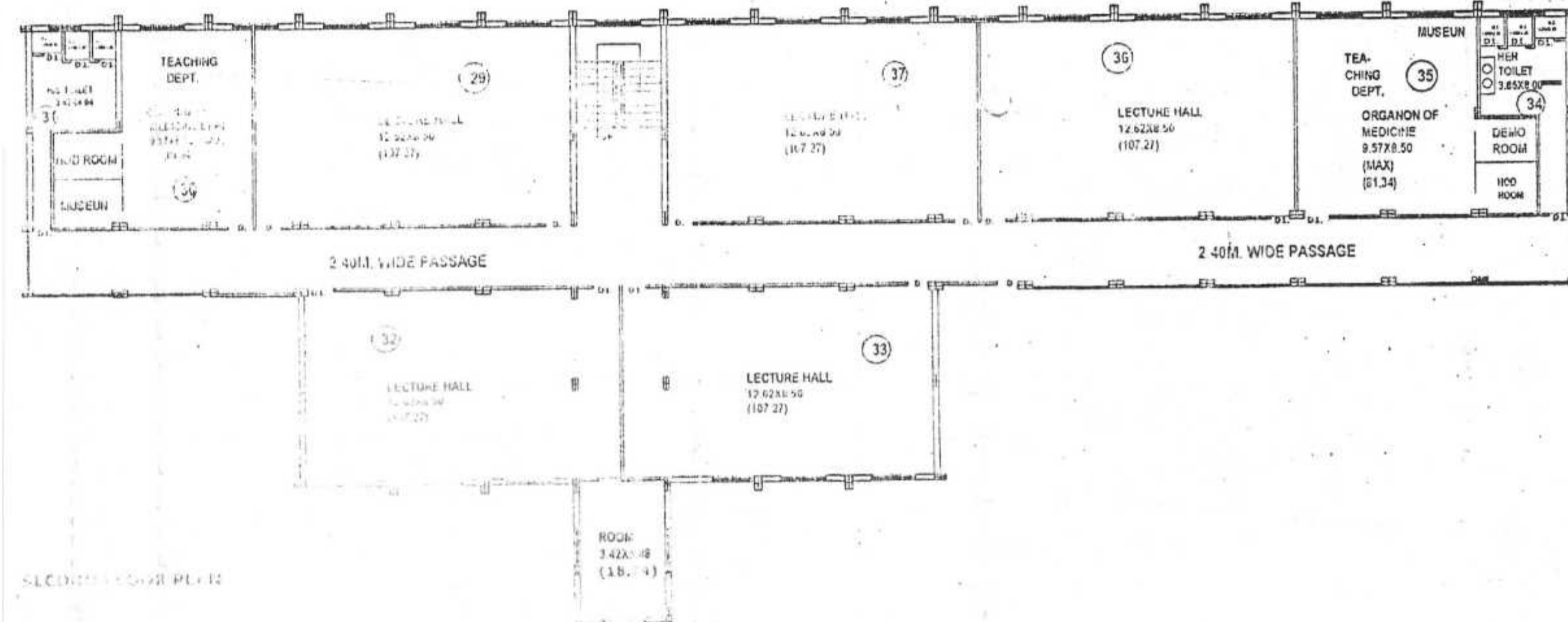
ELEVATION



SECTION AT A-A



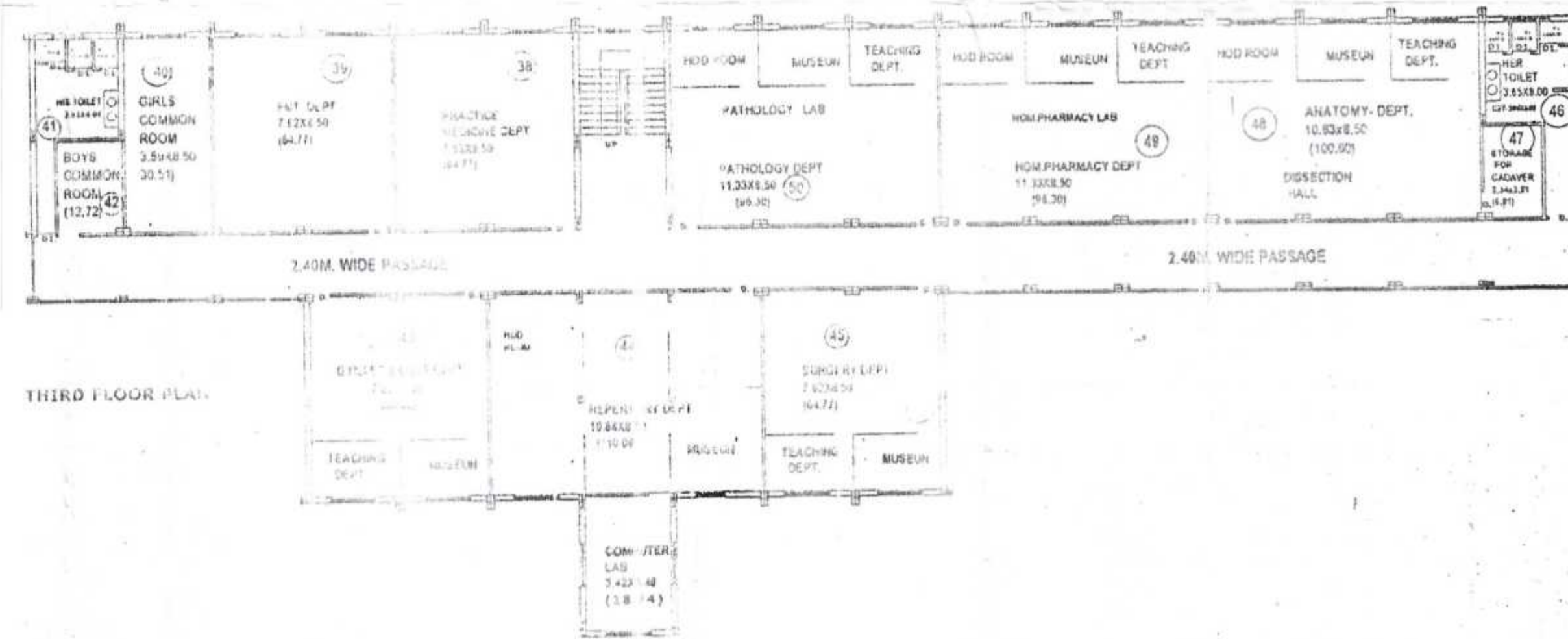
1ST FLOOR PLAN



2ND FLOOR PLAN



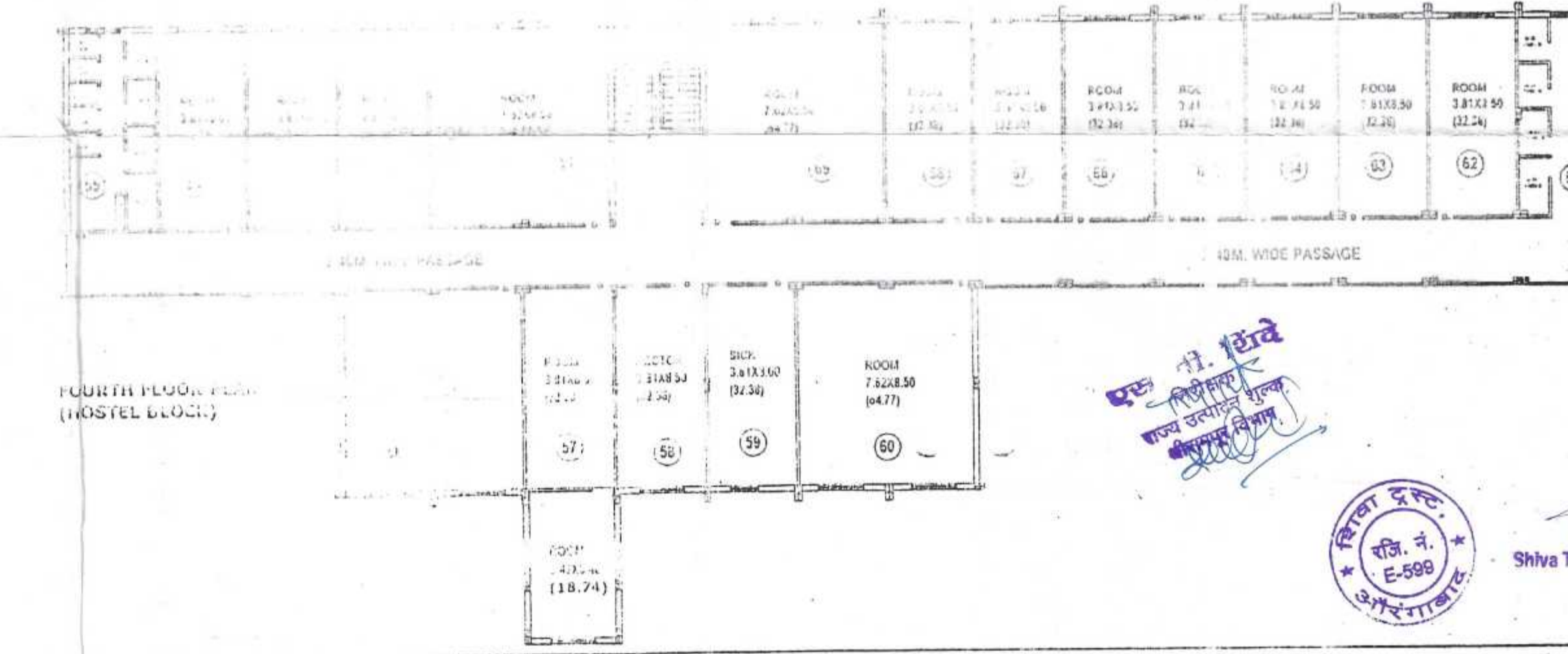
GROUND FLOOR PLAN



3RD FLOOR PLAN



SITE PLAN (LOCATION)



4TH FLOOR PLAN (HOSTEL BLOCK)

PRINCIPAL HOSPITAL SUPERINTENDENT
SHARADCHANDRAJI PAWAR HOMOEOPATHIC
Medical College & Hospital,
At, Wadala Mahadev, Tq. Shrirampur.

PRINCIPAL HOSPITAL SUPERINTENDENT
SHARADCHANDRAJI PAWAR HOMOEOPATHIC
Medical College & Hospital,
At, Wadala Mahadev, Tq. Shrirampur.

आचार्य पदवी मंडळ
अहमदाबाद
20/3/2014

प्राथमिक अधिकारी
प्राथमिक वहादारी मंडळ
ना. श्रीरामपूर, जि. अहमदाबाद

AREA STATEMENT

1. PLOT AREA	= 21456.03 SQ.M.
2. BUILT UP AREA ON GROUND FLOOR	= 952.31 SQ.M.
3. BUILT UP AREA ON FIRST FLOOR	= 952.31 SQ.M.
4. BUILT UP AREA ON SECOND FLOOR	= 52.31 SQ.M.
5. BUILT UP AREA ON THIRD FLOOR	= 102.31 SQ.M.
6. BUILT UP AREA ON FOURTH FLOOR	= 102.31 SQ.M.
7. TOTAL BUILT UP AREA	= 761.55 SQ.M.

SHIVA TRUST'S PROPOSED SHARADCHANDRAJI
PAWAR HOMOEOPATHIC MEDICAL COLLEGE &
HOSPITAL, S. NO. 6, AT-WADALA MAHADEV,
TQ.-SHRIRAMPUR,
DIST :- AHMEDNAGAR

NOTE:
DO NOT SCALE THE DRAWING / FOLLOW THE WRITTEN DIMENSIONS ONLY.

DATE - 16-08-2014
SUBMISSION DRAWING

ARCHITECT
S. GHUMBAR
ARCHITECT

OWNER
SHIVA TRUST
Chairman
Shiva Trust, Aurangabad.

जिल्हाधिकारी अहमदाबाद
अहमदाबाद

Stamp and signature area at the bottom right corner.